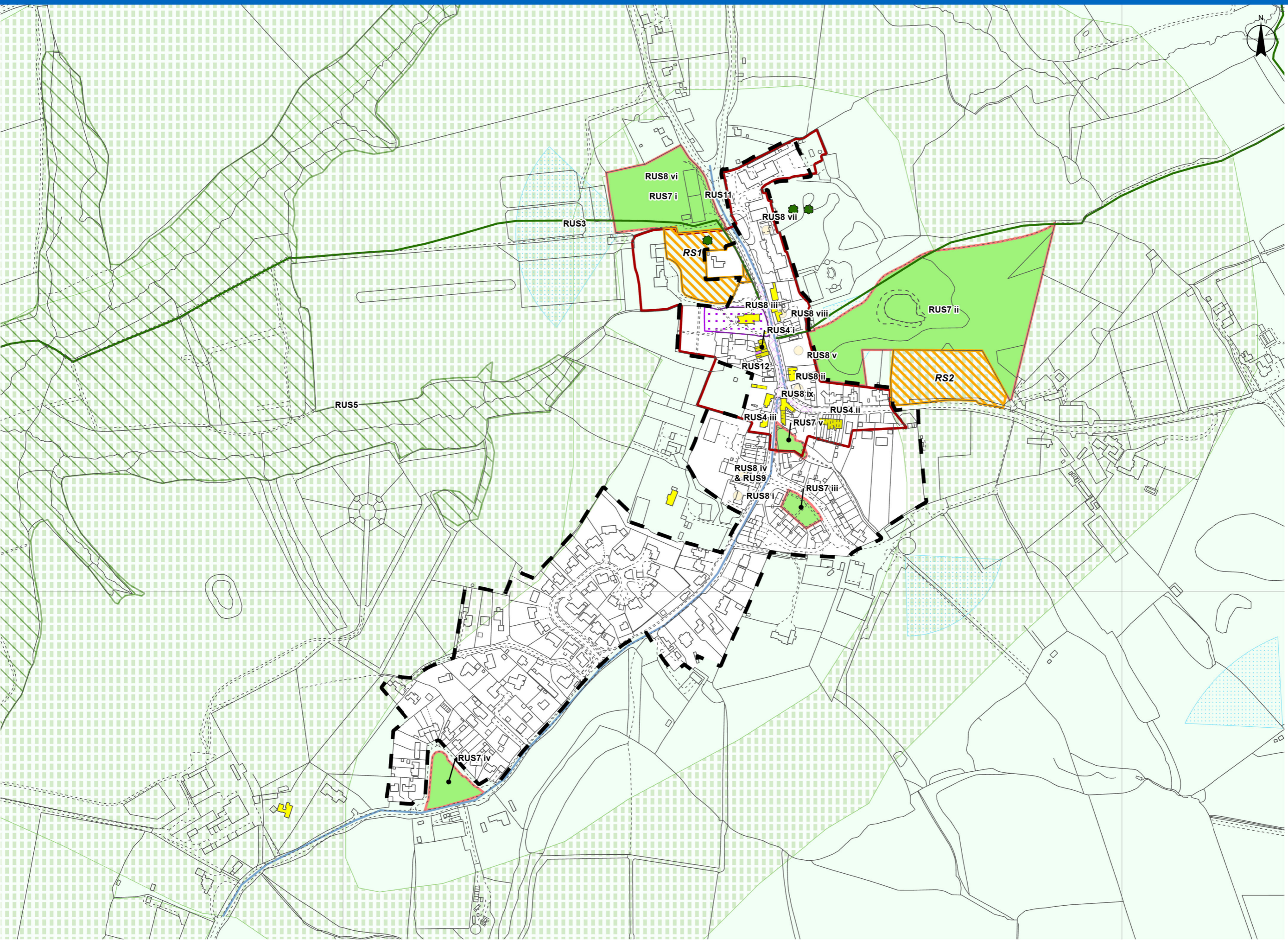
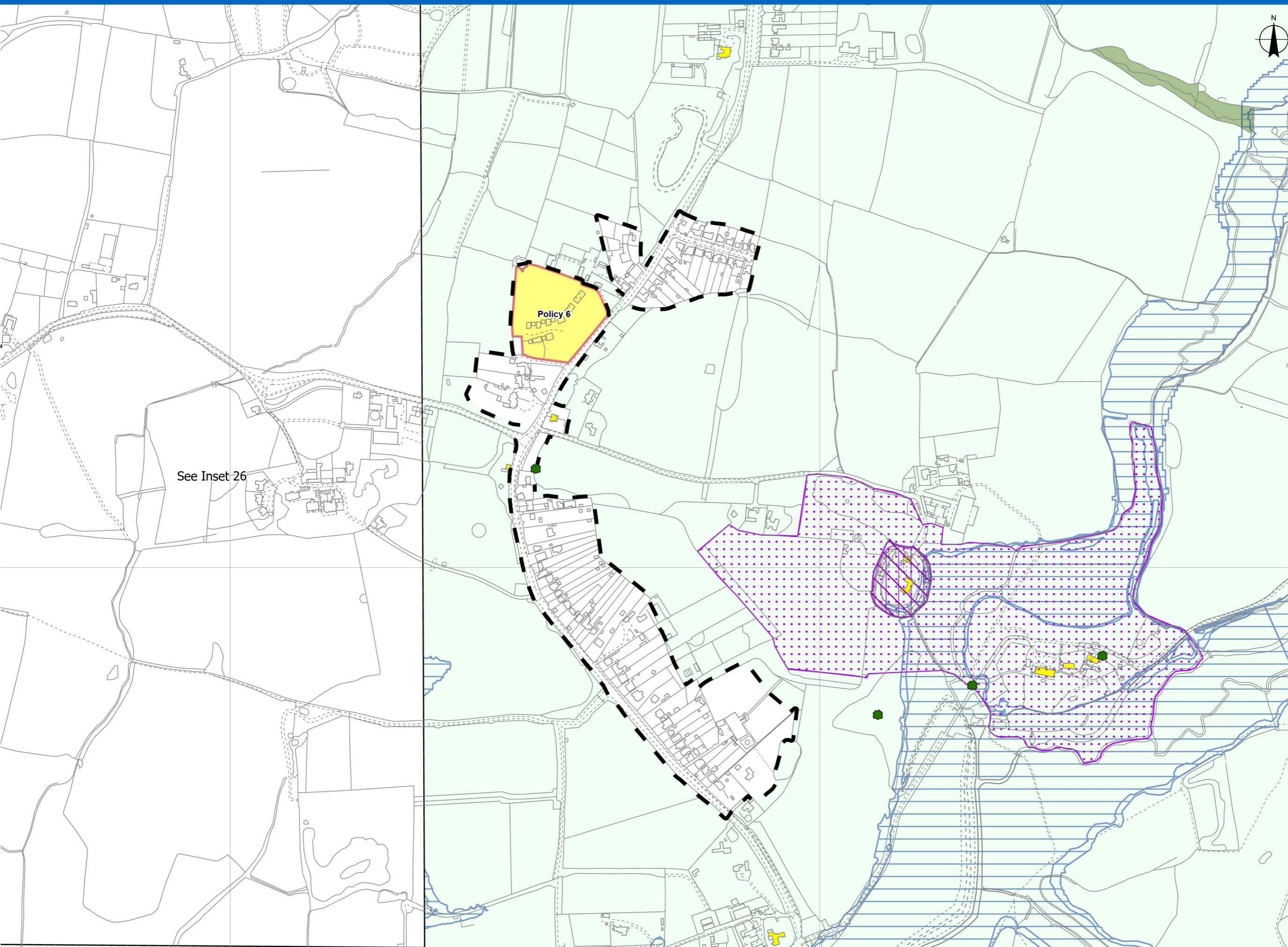


- Rudgwick Neighbourhood Plan Allocations**
- Important Local Facilities: Policy RNP12.1 – Jubilee Hall; King George V Playing Field; Parade of Shops, Rudgwick; Pennthorpe School; Rudgwick Chapel; Rudgwick Hall; Rudgwick Medical Centre; Rudgwick Primary School; Scout Hut / Pre-School
 - Local Green Space: Policy RNP16.1 – Haven Road & Naldretts Lane Open Spaces; Church Street; Churchmans Meadow; King George V Playing Fields; Land at Foxholes Woods; Summerfold Open Space
 - Parish Employment Area: Policy RNP10 – Bucks Green; Ridge Farm; Rudgwick Metals; The Old Brickworks, Lynwick Street
 - Village Centre: Policy RNP5.2 Housing Density & Policy RNP8.1 Development Height



Rusper Neighbourhood Plan Allocations

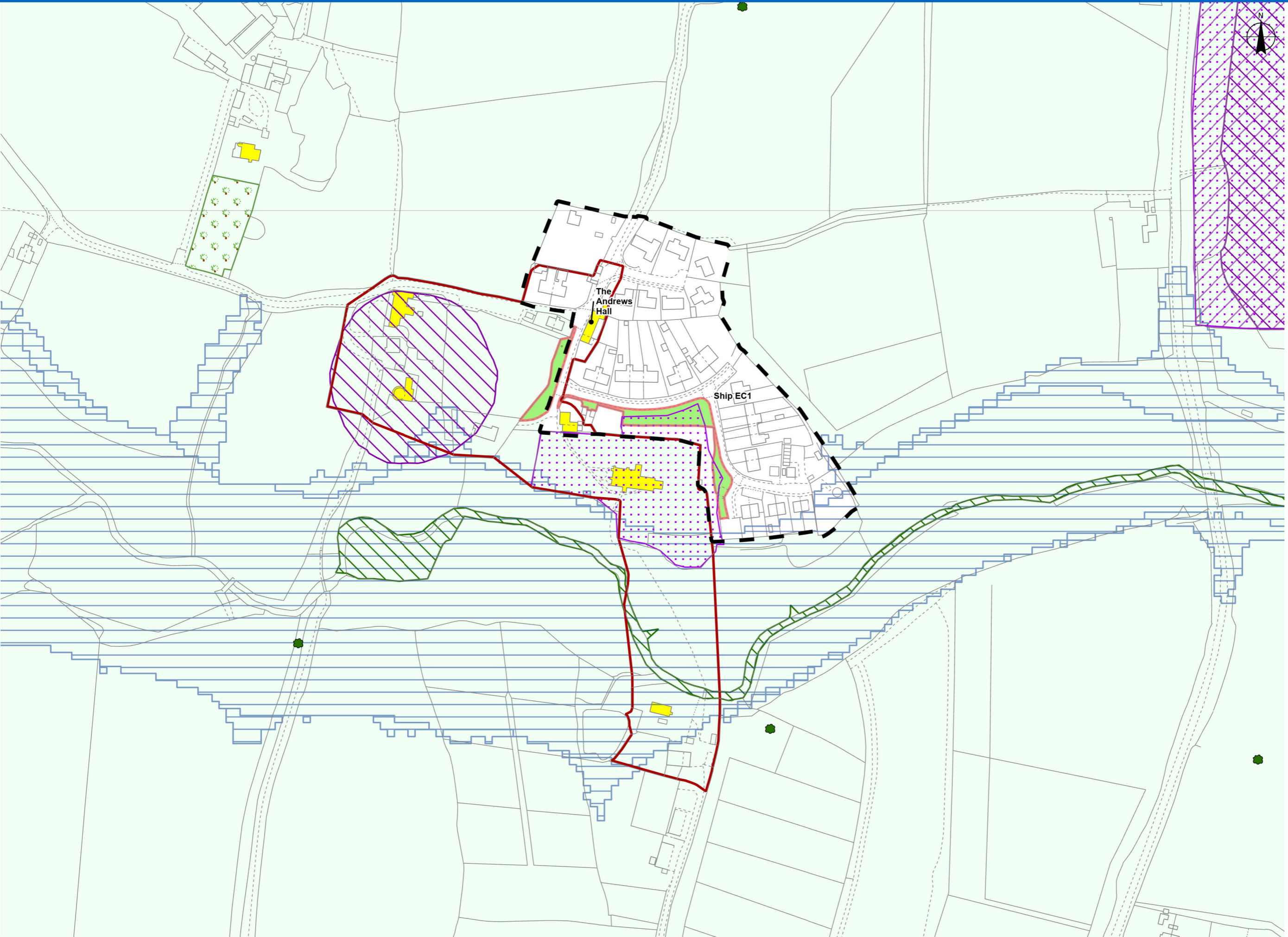
- Community Facilities: Policy RUS8: i – Rusper Village Hall; ii – Village Store & Post Office; iii – St Mary Magdalene Church; iv – Rusper Primary School (&RUS9); v – Children’s Playground; vi – The Sports Field; vii – Ghyll Manor Hotel & Restaurant; viii – The Plough & Attic Rooms; ix – The Star Inn
- Green Infrastructure Network: Policy RUS5 – Biodiversity Opportunity Area; Wildlife Corridors
- Important Vistas: Policy RUS3 – Design (Retention of key views out to countryside)
- Local Green Spaces: Policy RUS7: i – Recreation Ground, High Street; ii – Ghyll Manor Field; iii – Cooks Mead Green; iv – Gardeners Green; v – Behind Star Inn, Rusper Road
- Local Heritage Assets: Policy RUS4: i – No’s 1-5 Church Cottages, High Street; ii – No’s 1-8 Cottages south of East Street; iii – No’s 1-4 Star Cottages, Horsham Road
- Movement Routes: Policy RUS11 – Promoting Sustainable Transport
- Rusper Village Home Zone: Policy RUS12 – Developer Contributions



Wineham & Shermanbury Neighbourhood Plan Allocations

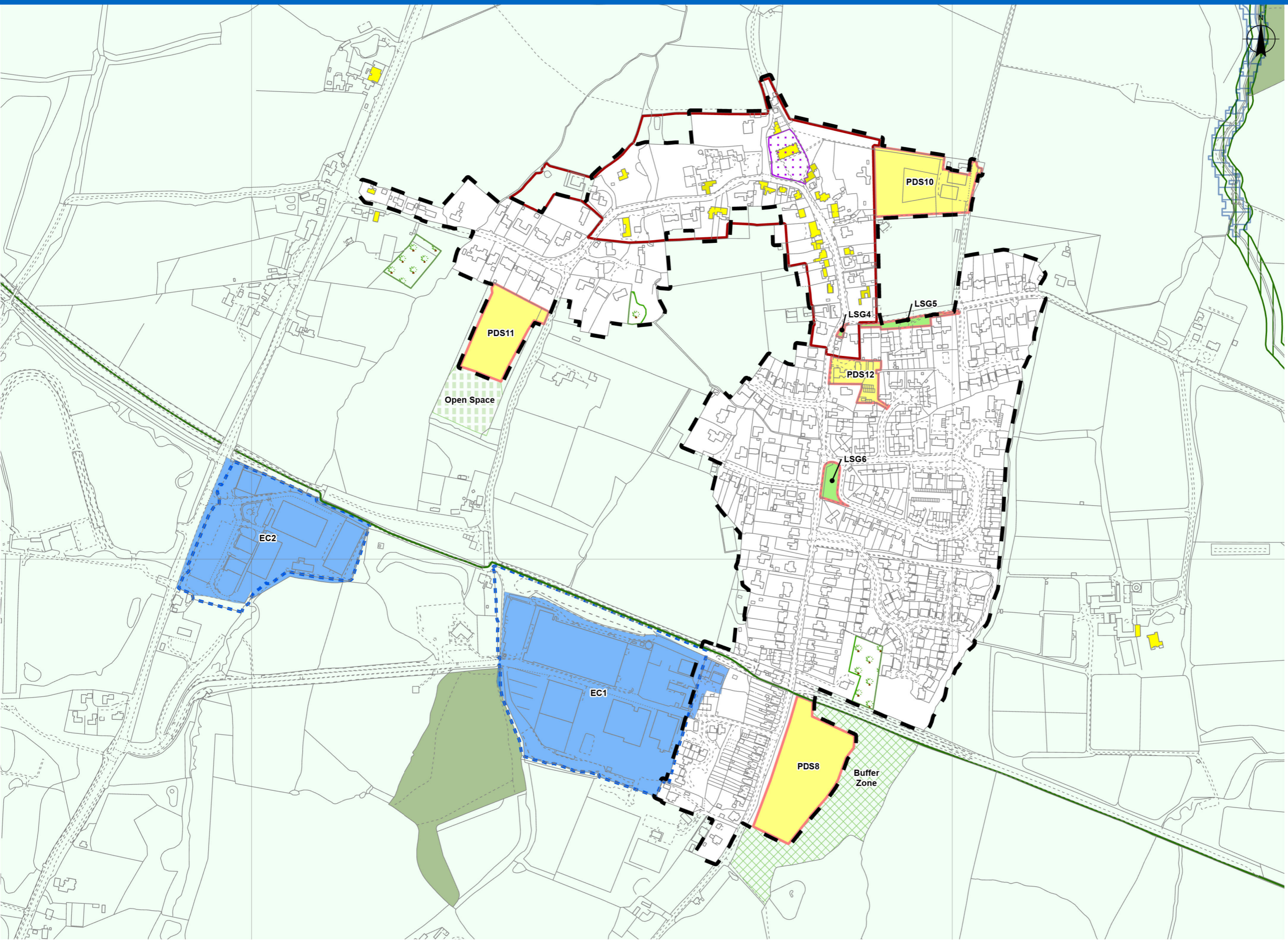
Policy 6 - Housing Allocation Earmarks

See Inset 26

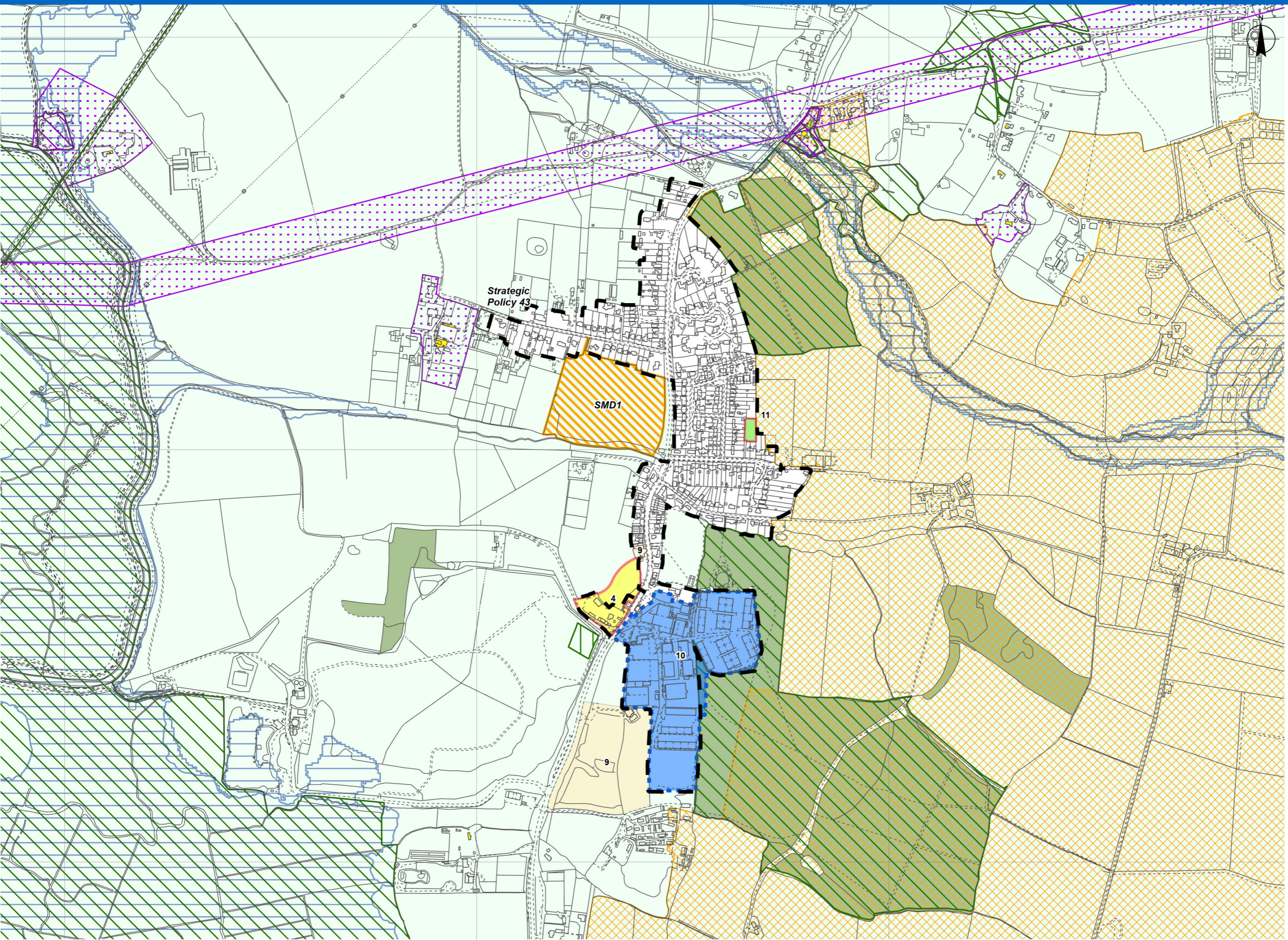


Shipley Neighbourhood Plan Allocations

- Local Green Space: Policy Ship EC1 – Church Close / Red Lane
- Retail, Social & Community Facilities: Policy Ship CO1 - The George & Dragon, Dragons Green; Coolham Village Hall; The Andrews Hall; The Countryman Inn, Shipley; The Selsey Arms, Coolham



- Slinfold Neighbourhood Plan Allocations**
- Buffer Zone
 - Employment Allocation: EC1. Maydwell Avenue; EC2. Spring Cope
 - Green Gap - Open Space
 - Housing Site Allocation: PDS8. East of Hayes Lane; PDS10. Crosby Farm; PDS11. West of Spring Lane; PDS12. The Cobblers, Hayes Lane;
 - Local Green Space: LSG4. Land by Stone Cottages; LSG5. Land Fronting Lyons Close; LSG6. Lowfield Green



Upper Beeding Neighbourhood Plan Allocations

- Community Facilities: Policy 9 – Allotments, Upper Beeding; Beeding & Bramber Village Hall; Gladys Bevan Hall, Upper Beeding; HUB Café, Upper Beeding; Hillside Scout Camp, Small Dole; Small Dole Village Hall; The Fox Public House, Small Dole; Memorial Playing Fields, Upper Beeding; Old School Building, Upper Beeding; Sports & Youth Room, Upper Beeding; Sports Pavilion, Old School, Upper Beeding; St. Peter's Parish Church, Upper Beeding; The Kings Head Public House, Upper Beeding; The Rising Sun Public House, Upper Beeding; Towers Convent School, Upper Beeding; Towers Convent, Upper Beeding; Upper Beeding Baptist Church; Upper Beeding Football & Cricket Clubs; Upper Beeding Primary School; Upper Beeding Surgery
- Employment Sites: Policy 10 – Mackleys Business Park, Small Dole
- Housing Site Allocation: Policy 4 – Land at Southern End of Oxcroft Farm, Small Dole
- Local Green Space: Policy 11 – Small Dole Playground, BN5 9XE

